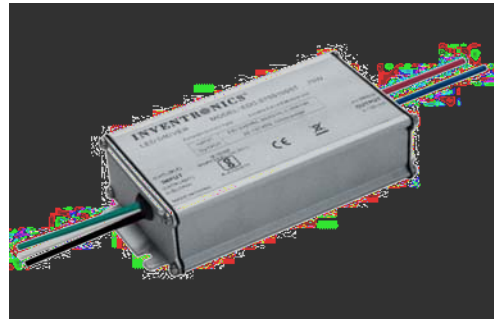


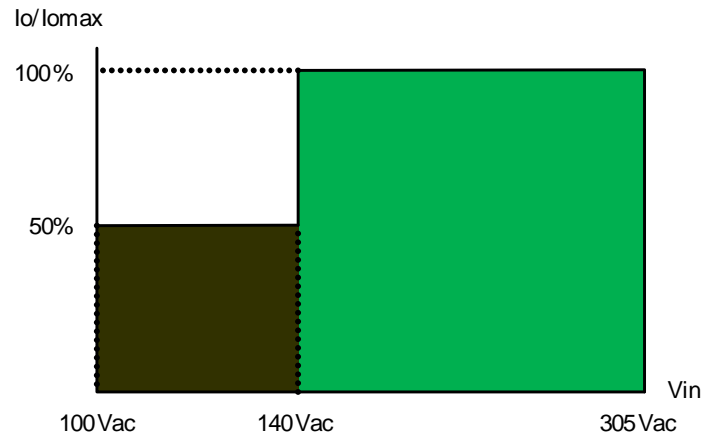
- K? ; (' fl
- O' %fl
- 1 +bM -bM
- 
- : @jj @
- 
- Ł
- @--
- 5



< : \$ . , J ( ' , JK\$ ' ' x . , N @--

( + ' \$ \* ' , Mac

	(1)(2)			(3)	(3)	
700 mA	140 ~ 305 Vac	54 ~ 107 Vdc	75 W	90.5%	0.96	EDC-075S105ST-0007
860 mA	140 ~ 305 Vac	44 ~ 88 Vdc	75 W	90.5%	0.96	EDC-075S105ST-005530573
						5 4330638
						6 553 433(



	140 Vac	-	305 Vac	
	47 Hz	-	63 Hz	
	-	-	0.70 mA	IEC60598-1; 240Vac/60Hz
	-	-	0.42 A	

	-	-	0.5 s
	-	0.06%/°C	-

: iee OCad g OP\$>)

@220Vac: EDC-075S105ST-0007 EDC-075S105ST-0004 EDC-075S105ST	88.5% 88.5% 88.0%	90.5% 90.5% 90.0%	- - -
	-	806,000 Hours	-
	-	101,000 Hours	-
	-40°C	-	+90°C
	-40°C	-	+75°C
	-40°C	-	+85°C
$\sum C \times N \times ? \sum$ $\sum C \times N \times ? \sum$	$+ \% O \times ) \% ) \times ( \% -$ $(( + \times - + \times * )$		$, \% - \times ) \% ) \times ( \% -$ $( * ( \times - + \times * )$
	-	500 g	-

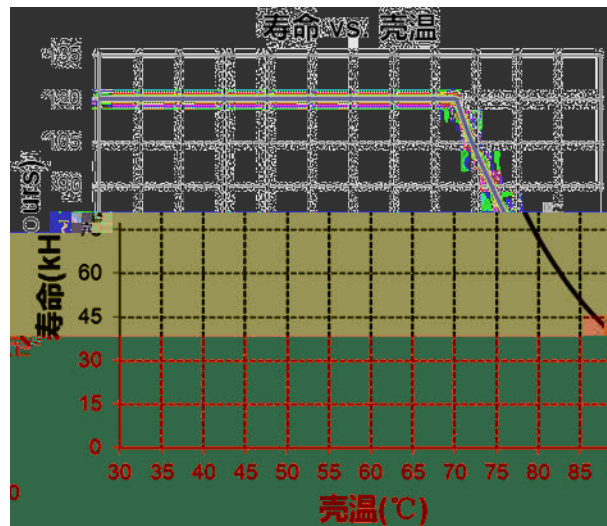
: iee OCad g OP\$>)

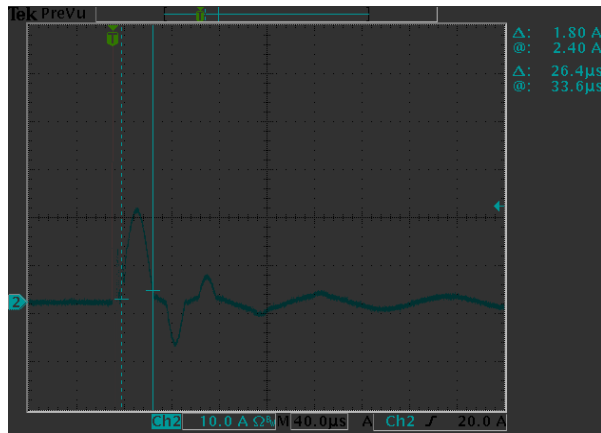
CE	EN 61347-1, EN 61347-2-13
KS	KS C 7655
BIS	IS 15885(PART2/SEC13)
<b>EMI</b>	
EN 55015 <sup>(1)</sup>	Conducted emission Test & Radiated emission Test
EN 61000-3-2	Harmonic current emissions

EMI	
EN 61000-3-3	Voltage fluctuations & flicker
EMS	
EN 61000-4-2	Electrostatic Discharge (ESD): 8 kV air discharge, 4 kV contact discharge
EN 61000-4-3	Radio-Frequency Electromagnetic Field Susceptibility Test-RS
EN 61000-4-4	Electrical Fast Transient / Burst-EFT
EN 61000-4-5	Surge Immunity Test: AC Power Line: Differential Mode 4 kV, Common Mode 6 kV
EN 61000-4-6	Conducted Radio Frequency Disturbances Test-CS
EN 61000-4-8	Power Frequency Magnetic Field Test
EN 61000-4-11	Voltage Dips
EN 61547	Electromagnetic Immunity Requirements Applies To Lighting Equipment

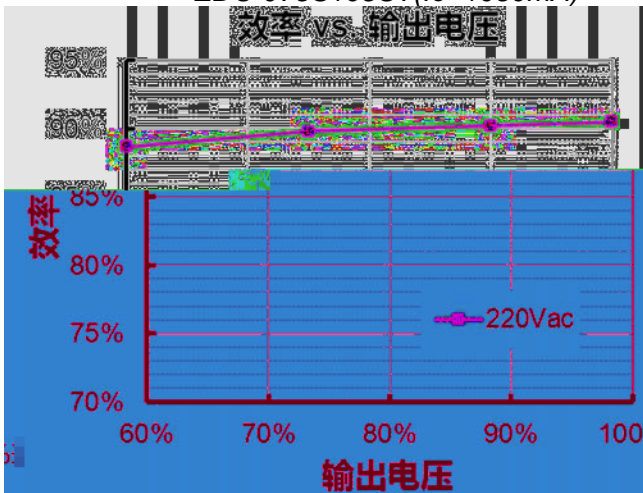
( <D @

ž ž <D @

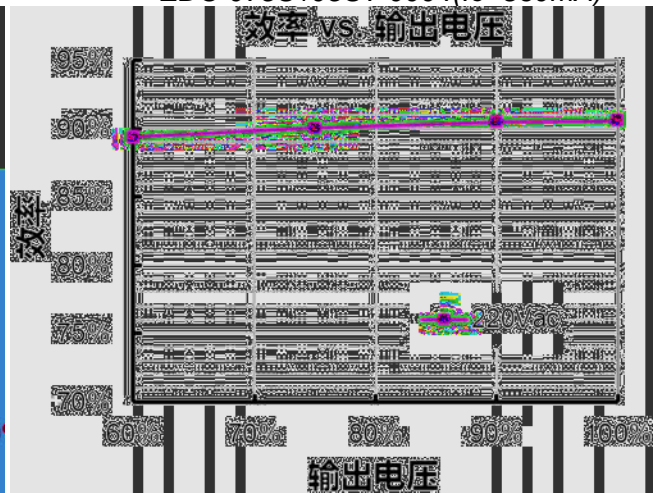




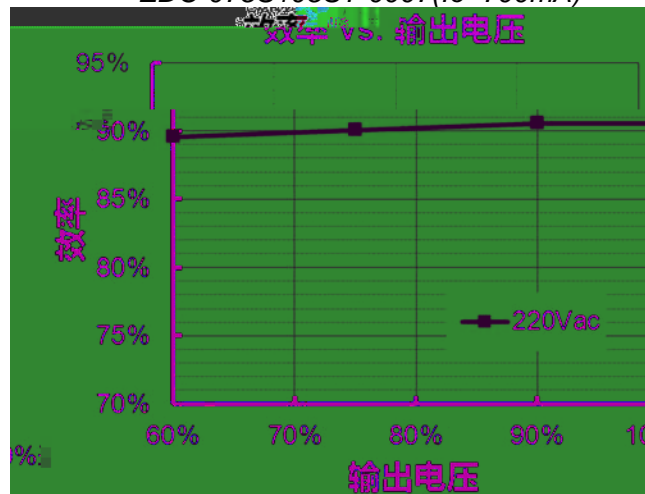
EDC-075S105ST( $I_o=1050\text{mA}$ )

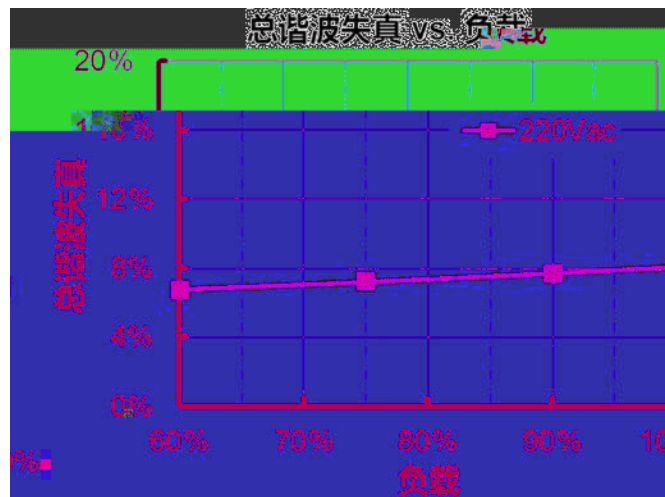
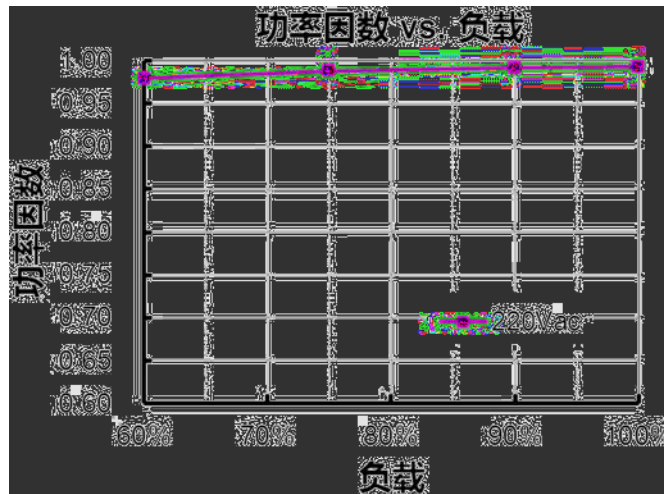


EDC-075S105ST-0004( $I_o=860\text{mA}$ )



EDC-075S105ST-0007( $I_o=700\text{mA}$ )





			100V	

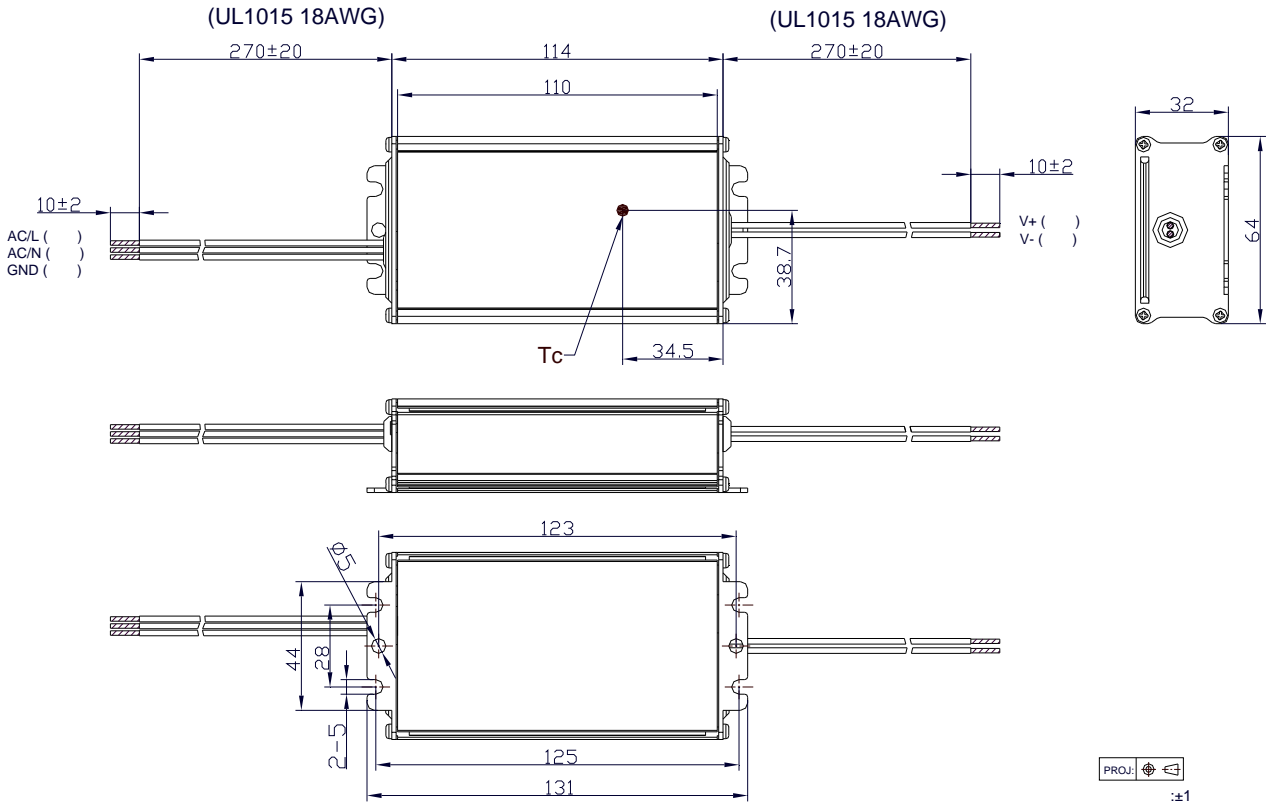


EDC-075S105ST-000x

Rev. C

75W IP66

		320 Vac	340 Vac	360 Vac



RoHs

l f ? J ) ' ( ( & , & L

< L ) ' ( , & / - \*

X

*EDC-075S105ST-000x*

*Rev. C*

*75W IP66*

*9 / 9*

*220Vac*

*25°C*